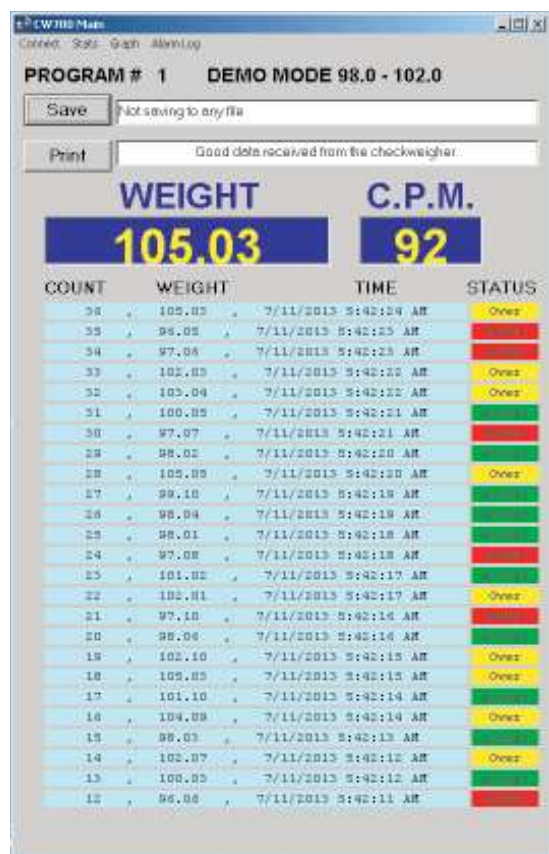


CHECKWEIGHER

DATA CAPTURE SOFTWARE

Routes Checkweigher Weight Data Directly to Your Desktop Computer



The All-Fill Checkweigher data capture software is a PC-based utility to instantly transfer each container's weight directly to a PC. Any All-Fill Checkweigher – CW-10, EW-8, PW-12, MW-16, HP-14, HW-15 equipped with CW700 controls can be used for data capture to your PC. The Data Capture Software can connect via an ethernet connection or RS-232 connection. Older All-Fill and Alpha Checkweigher models may require a software update to use the Data Capture Software.

The software installs easily on most standard configuration PC's (see "System Requirements"). Upon installation, a screen appears to specify connection to the All-Fill Checkweigher. Once connected, a central Weight Log screen appears listing the Setup Program's Product Code, each checkweighed package, product code, time/date, and accept/over/under status. Print and save commands on this screen can specify where the weight data is recorded or listed in a printer. The save command allows data to be recorded as either ASCII text or comma delimited formats for use with other applications (i.e., spreadsheets, databases, etc.)

A current batch report screen lists relevant weight data for the current and most recent batch. A pie chart graph on this screen provides a graphic depiction of batch weights and status. A weight graph screen displays weight trending data over time with user-selectable maximum and minimum weight limits. An alarm log screen provides a summary of any checkweigher errors by type, date, and time. The weight graph and alarm log are for display/printing purposes only. Data is not written to any files.

ADDITIONAL SOFTWARE FEATURES:

System Requirements: The Single Weight Data Capture software has been designed for use with any PC running the Windows platform, version PC up to Windows 7. MS Office highly recommended for use of single weight data.

Weight Log

1	DEMO MODE 98.0 - 102.0	103.08	Over	12/26/2013 9:09:50 AM
1	DEMO MODE 98.0 - 102.0	104.03	Over	12/26/2013 9:09:51 AM
1	DEMO MODE 98.0 - 102.0	100.09	Accept	12/26/2013 9:09:51 AM
1	DEMO MODE 98.0 - 102.0	104.05	Over	12/26/2013 9:09:52 AM
1	DEMO MODE 98.0 - 102.0	100.04	Accept	12/26/2013 9:09:52 AM
1	DEMO MODE 98.0 - 102.0	98.09	Accept	12/26/2013 9:09:53 AM
1	DEMO MODE 98.0 - 102.0	101.06	Accept	12/26/2013 9:09:53 AM
1	DEMO MODE 98.0 - 102.0	102.01	Over	12/26/2013 9:09:54 AM
1	DEMO MODE 98.0 - 102.0	103.03	Over	12/26/2013 9:09:54 AM
1	DEMO MODE 98.0 - 102.0	96.03	Under	12/26/2013 9:09:55 AM
1	DEMO MODE 98.0 - 102.0	105.04	Over	12/26/2013 9:09:55 AM
1	DEMO MODE 98.0 - 102.0	102.04	Over	12/26/2013 9:09:56 AM
1	DEMO MODE 98.0 - 102.0	99.04	Accept	12/26/2013 9:09:56 AM
1	DEMO MODE 98.0 - 102.0	98.03	Accept	12/26/2013 9:09:57 AM
1	DEMO MODE 98.0 - 102.0	100.07	Accept	12/26/2013 9:09:57 AM
1	DEMO MODE 98.0 - 102.0	98.07	Accept	12/26/2013 9:09:58 AM
1	DEMO MODE 98.0 - 102.0	101.07	Accept	12/26/2013 9:09:58 AM
1	DEMO MODE 98.0 - 102.0	96.01	Under	12/26/2013 9:09:59 AM
1	DEMO MODE 98.0 - 102.0	97.03	Under	12/26/2013 9:09:59 AM
1	DEMO MODE 98.0 - 102.0	99.06	Accept	12/26/2013 9:10:00 AM
1	DEMO MODE 98.0 - 102.0	98.09	Accept	12/26/2013 9:10:00 AM
1	DEMO MODE 98.0 - 102.0	104.06	Over	12/26/2013 9:10:01 AM
1	DEMO MODE 98.0 - 102.0	99.01	Accept	12/26/2013 9:10:01 AM
1	DEMO MODE 98.0 - 102.0	98.02	Accept	12/26/2013 9:10:02 AM
1	DEMO MODE 98.0 - 102.0	102.1	Over	12/26/2013 9:10:02 AM
1	DEMO MODE 98.0 - 102.0	99.03	Accept	12/26/2013 9:10:03 AM
1	DEMO MODE 98.0 - 102.0	104.02	Over	12/26/2013 9:10:03 AM
1	DEMO MODE 98.0 - 102.0	101.07	Accept	12/26/2013 9:10:04 AM
1	DEMO MODE 98.0 - 102.0	102.07	Over	12/26/2013 9:10:05 AM
1	DEMO MODE 98.0 - 102.0	104.01	Over	12/26/2013 9:10:05 AM

Batch Report

Not saving to any file

Current Batch Report

Start Time: 7/11/2013 5:43:17 AM

Last Weight: 103.08 CPM: 120

Average: 100.93 Std Dev: 1.544

Max Wt: 103.08 Min Wt: 98.04

Total: 8 Good: 5

Over: 3 Under: 0

End Batch Print

Accept

Under

Over

Last Batch Report

Start Time: 7/11/2013 5:42:06 AM

End Time: 7/11/2013 5:43:17 AM

Average: 100.32 Std Dev: 2.889

Max Wt: 105.09 Min Wt: 96.01

Total: 140 Good: 62

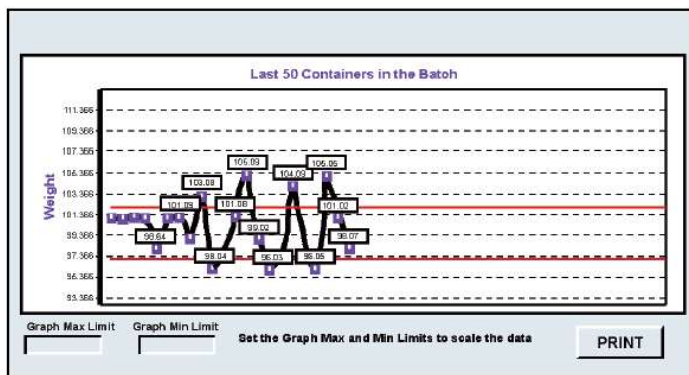
Over: 49 Under: 29

Accept

Under

Over

Weight Graph Display



Alarm Log

"There have been 10 rejects in a row, 7/19/2013 3:46:19 AM"

"Reject Alarm cleared, 7/19/2013 3:46:22 AM"

"There have been 10 rejects in a row, 7/19/2013 3:50:19 AM"

"Reject Alarm cleared, 7/19/2013 3:50:22 AM"

CLEAR LOG Print Log

WORLD-CLASS SERVICE & SUPPORT:

We understand downtime and its effect on your bottom line. Packaging machinery is only as strong as its service and support system. If you run into challenges, All-Fill's Service team consists of 15 full time service employees with over 150 years of combined experience in the packaging industry. Our team can train, install, and troubleshoot any All-Fill machinery. We service domestically and in our international territories: Canada, Central and South America, India, China and Australia. Contact our Service team at Service@all-fill.com.

PARTS SUPPORT:

All-Fill machines are designed using the most innovative controls and the highest quality parts and components. All-Fill has an unmatched ability to identify and resolve issues that may arise with your machine. Our parts department provides quality support in a timely manner to reduce your downtime and stocks most parts for quick delivery. From mechanical assemblies, electronic components, tooling, machine accessories and software, we have the parts you need. Contact our Parts Department at AFI-parts@all-fill.com.

INTERNATIONAL INQUIRIES:

All-Fill's packaging machinery is available worldwide for almost any product and industry. Our more than 50 years of engineering expertise combined with our industry leading field support makes us a leader in the industry. We design, manufacture, install and service machinery with maximum accuracy and reliability. Our global presence means uncompromising service and support, no matter what or where your needs are. Reach out today to discuss your project with our international sales team. Contact us at info@all-fill.com.