

## CHECKWEIGHERS

# CW/10

For Economical Weighing of Small Boxes, Bottles, Cans, and Cartons



All-Fill's CW-10 is the checkweigher for fast and accurate weighing applications, weighing packages up to 10 lbs at speeds of 250 containers per minute. Our modular design offers the ruggedness and durability for demanding production environments. The CW-10 can achieve accuracies to 0.5 grams and .01 grams resolution, depending on the application. Save money and maximize efficiencies with our seamless filler integration and feedback capabilities. The All-Fill CW-10 offers packagers flexibility in adapting it for use with other equipment and to meet a variety of requirements. Its conveying medium is a nylatron, poly or stainless steel chain.

The variable speed drive accommodates all conveyors. Its feet are adjustable for proper leveling of the machine. A variety of options are available for rejecting "out of spec" packages, including pushers, boppers, air, sweep arms, drop belts, and audible alarms. A box structural frame helps to ensure accurate, reliable weighing of packages.

All weighing operations are controlled by the All-Fill CW-10's flexible, 3-to-5-zone CW700 digital control system, which is easy to integrate with data networks. The system features a user-friendly, graphical touchscreen and a simplified menu and selection structure for all operating functions. Up to 100 different set-ups can be entered for each size, weight, container, or package (up to 300 as an option). An exclusive automatic calibration feature determines all relevant operating parameters for optimum accuracy and checkweighing efficiency. For at-a-glance updates, the All-Fill CW-10 features a large character weight, display, and easy-to-see tower lights.

Everything about the All-Fill CW-10 is made for reliable operation even in the harshest industrial environments. A compact, rugged frame enables easy installation in tight production spaces with an existing filling line. The Use of a digital load cell eliminates environmental interference. and health regulations.

### FEEDBACK CAPABILITIES:

As an option, All-Fill Checkweighers can be equipped to provide feedback signals to different equipment in order to correct weights to a desired target weight. The touch-screen control panel software includes an easy to use screen to set and control feedback parameters such as:

- Feedback Control
- Dead band Range
- Feedback Limit
- Percent of Adjustment
- Feedback Ignores
- Feedback Samples

An additional feedback status screen displays relevant feedback data including:

- Package Weight
- Feedback Range
- Ignored Packs
- Feedback Samples

- Average Feedback Weight
- Average Deviation Weight
- Feedback Raise/Lower Status
- Feedback Pulses
- Feedback On/Off Control

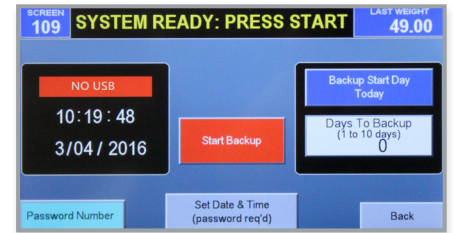
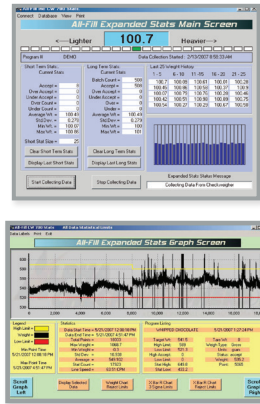
**DATA SOFTWARE PACKAGES:**

All-Fill Checkweighers provide three different data software packages that range in function. The data output package records the weight and package data detected by the All-Fill Checkweighers. All relevant package data is recorded, including:

- Date and Time
- Weighing Time
- Setup Recipe Number

- Product Name
- Target Weight
- Last Weight
- High/Low/Accept Status

Data Capture: Data is sent to an ethernet connection or RS-232 connection. The software installs easily on most standard configuration PC's and is exported in a Comma Separated Values (.csv) document.



Shown here are images from our software package, displaying a variety of statistics to make sure your packaging process is running efficiently and

**SPECIFICATION SUMMARY:**

<b>Line Speeds:</b>	Up to 250 packs per minute
<b>Accuracy:</b>	+/- 500 mg, depending on application
<b>Package Weights:</b>	Up to 10 lbs. per package
<b>Maximum Package Dimensions:</b>	12" (305 mm) long by 8" (203 mm) wide; other sizes available
<b>Construction:</b>	Stainless steel and anodized aluminum (standard)
<b>Direction of Travel:</b>	Left to right or right to left
<b>Conveyor Belts:</b>	Chain 8" wide x 12" long, 8" wide x 18" long, and custom
<b>Weight Indicator:</b>	3 light tower (standard), 5 light tower (optional), others
<b>Controls:</b>	Standard 10" touch screen HMI with embedded controller 100 program memory
<b>Control Mounting:</b>	Rear-mounted control box (standard) front-mounted, pedestal, and rotated 180° (optional)
<b>Data Output:</b>	RS-232, ethernet, or USB
<b>Reject Devices:</b>	Heavy duty pusher, stop belt, or signal (only), bopper, air blast, diverter, horn or drop belt
<b>Reject Location:</b>	Outfeed conveyor or remote
<b>Reject Direction:</b>	Front, rear, or special
<b>Electrical Requirements:</b>	110V single phase, 60 HZ
<b>Pneumatic Requirements:</b>	80 PSI / 4 SCFM
<b>Options:</b>	Special construction; explosion-proof, wash down, and more, container transfer: roller or dead plate, guide rails, timing screws, side belts
<b>Feedback:</b>	Contact closure, digital, single/dual head filler, or custom, reject horn alarm

**WORLD-CLASS SERVICE & SUPPORT:**

We understand downtime and its effect on your bottom line. Packaging machinery is only as strong as its service and support system. If you run into challenges, All-Fill's Service team consists of 15 full time service employees with over 150 years of combined experience in the packaging industry. Our team can train, install, and troubleshoot any All-Fill machinery. We service domestically and in our international territories: Canada, Central and South America, India, China and Australia. Contact our Service team at [Service@all-fill.com](mailto:Service@all-fill.com).

**PARTS SUPPORT:**

All-Fill machines are designed using the most innovative controls and the highest quality parts and components. All-Fill has an unmatched ability to identify and resolve issues that may arise with your machine. Our parts department provides quality support in a timely manner to reduce your downtime and stocks most parts for quick delivery. From mechanical assemblies, electronic components, tooling, machine accessories and software, we have the parts you need. Contact our Parts Department at [AFI-parts@all-fill.com](mailto:AFI-parts@all-fill.com).

**INTERNATIONAL INQUIRIES:**

All-Fill's packaging machinery is available worldwide for almost any product and industry. Our more than 50 years of engineering expertise combined with our industry leading field support makes us a leader in the industry. We design, manufacture, install and service machinery with maximum accuracy and reliability. Our global presence means uncompromising service and support, no matter what or where your needs are. Reach out today to discuss your project with our international sales team. Contact us at [info@all-fill.com](mailto:info@all-fill.com).