

CHECKWEIGHERS

HW/15

Ideal for Handling Heavy Products



All-Fill HW-15 Checkweighers are heavyweight models capable of handling large size cases, bags, and packages, up to 42 inches in length and 24 inches in width. They can operate at speeds up to 50 containers per minute and handle packages weighing up to 200 lbs. Featuring a Four Point load cell design, the HW-15 can weigh with an accuracy of ± 0.25 oz, depending on the application. Reduce waste and increase accurate production with a heavyweight checkweigher from All-Fill.

Its weigh table is rigidly constructed and its belt, pulleys, and gearhead internal drive motors are all balanced to ensure accurate, reliable weighing of large packages. A continuous, programmable, variable-speed conveys while providing constant torque. A variety of communications choices are available for providing weight correction feedback to the filler to enhance filling accuracy. All weighing operations are controlled by the All-Fill HW-15's flexible,

3-to-5-zone CW700 digital control system, which is easy to integrate with data networks. The system features a user-friendly, graphical touchscreen and a simplified menu and selection structure for all operating functions. There are up to 100 different set-ups that can be entered for each size, weight, container, or package (up to 300 as an option). An exclusive automatic calibration feature determines all relevant operating parameters for optimum accuracy and checkweighing efficiency. For at-a-glance updates, the All-Fill HW-15 features a large character weight, display, and easy-to-see tower lights.

Everything about the All-Fill HW-15 is made for reliable operation even in the harshest industrial environments. A compact, rugged frame enables easy installation in tight production spaces and with an existing filling line. Use of a digital load cell eliminates environmental interference.

FEEDBACK CAPABILITIES:

As an option, All-Fill Checkweighers can be equipped to provide feedback signals to different equipment in order to correct weights to a desired target weight. The touch-screen control panel software includes an easy to use screen to set and control feedback parameters such as:

- Feedback Control
- Dead band Range
- Feedback Limit
- Percent of Adjustment
- Feedback Ignores
- Feedback Samples

An additional feedback status screen displays relevant feedback data including:

- Package Weight
- Feedback Range
- Ignored Packs
- Feedback Samples

- Average Feedback Weight
- Average Deviation Weight
- Feedback Raise/Lower Status
- Feedback Pulses
- Feedback On/Off Control

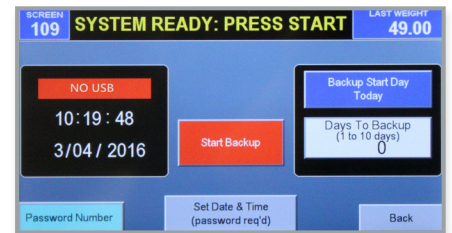
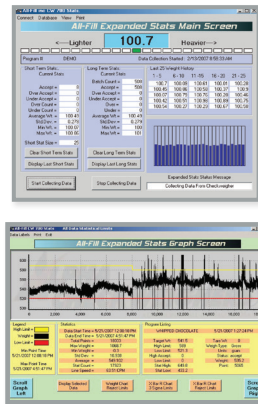
DATA SOFTWARE PACKAGES:

All-Fill Checkweighers provide three different data software packages that range in function. The data output package records the weight and package data detected by the All-Fill Checkweighers. All relevant package data is recorded, including:

- Date and Time
- Weighing Time
- Setup Recipe Number

- Product Name
- Target Weight
- Last Weight
- High/Low/Accept Status

Data Capture: Data is sent to an ethernet connection or RS-232 connection. The software installs easily on most standard configuration PC's and is exported in a Comma Separated Values (.csv) document.



Shown here are images from our software package, displaying a variety of statistics to make sure your packaging process is running efficiently and

SPECIFICATION SUMMARY:

Line Speeds:	Up to 50 packs per minute
Accuracy:	+/- 0.25 oz depending on application
Package Weights:	Up to 200 lbs. per package
Maximum Package Dimensions:	24" wide x 42" long and custom sizes
Construction:	Stainless steel and anodized aluminum (standard)
Direction of Travel:	Left to right or right to left
Conveyor Belts:	18" wide x 30" long, 24" wide x 36" long, 18" wide x 42" long, 18" wide x 48" long, or custom
Weight Indicator:	3 light tower (standard), 5 light tower (optional), others
Controls:	Standard 10" touch screen HMI with embedded controller 100 program memory
Control Mounting:	Rear-mounted control box (standard) Front-mounted, pedestal, and rotated 180° (optional)
Data Output:	RS-232, ethernet, or USB
Reject Devices:	Heavy duty pusher, stop belt, horn or signal (only)
Reject Location:	Outfeed conveyor or remote
Reject Direction:	Front, rear, or special
Electrical Requirements:	110V single phase, 60 HZ
Pneumatic Requirements:	80 PSI / 4 SCFM
Options:	Special construction; explosion-proof, wash down, and more, conveyor belt materials, container transfer: roller or dead plate
Feedback:	Contact closure, digital, single/dual head filler, or custom, reject horn alarm

WORLD-CLASS SERVICE & SUPPORT:

We understand downtime and its effect on your bottom line. Packaging machinery is only as strong as its service and support system. If you run into challenges, All-Fill's Service team consists of 15 full time service employees with over 150 years of combined experience in the packaging industry. Our team can train, install, and troubleshoot any All-Fill machinery. We service domestically and in our international territories: Canada, Central and South America, India, China and Australia. Contact our Service team at Service@all-fill.com.

PARTS SUPPORT:

All-Fill machines are designed using the most innovative controls and the highest quality parts and components. All-Fill has an unmatched ability to identify and resolve issues that may arise with your machine. Our parts department provides quality support in a timely manner to reduce your downtime and stocks most parts for quick delivery. From mechanical assemblies, electronic components, tooling, machine accessories and software, we have the parts you need. Contact our Parts Department at AFI-parts@all-fill.com.

INTERNATIONAL INQUIRIES:

All-Fill's packaging machinery is available worldwide for almost any product and industry. Our more than 50 years of engineering expertise combined with our industry leading field support makes us a leader in the industry. We design, manufacture, install and service machinery with maximum accuracy and reliability. Our global presence means uncompromising service and support, no matter what or where your needs are. Reach out today to discuss your project with our international sales team. Contact us at info@all-fill.com.