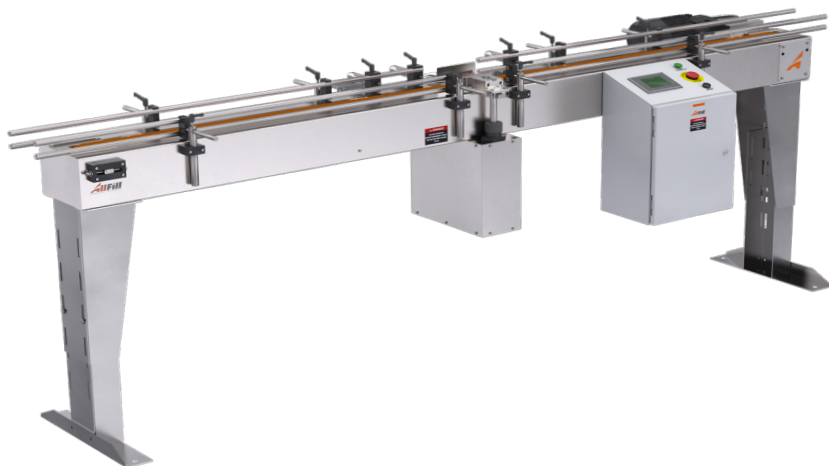


MACHINE ACCESSORIES

CONVEYOR SYSTEMS

All-Fill offers free standing conveyer systems with adjustable guide rail assemblies, container indexing controls, includes no-container/no-fill sensor, variable speed motors and electronic controls ready for installation into new or existing production lines. Conveying systems will integrate with most All-Fill machines.



SPECIFICATION SUMMARY:

Construction:	Heavy duty stainless steel
Chain:	Dual strand chain is standard, Optional plastic table top
Sizes:	6 ft, 8 ft. and longer lengths available upon request
Electrical Requirements:	208/230/460v, 3-phase, 60 HZ.

WORLD-CLASS SERVICE & SUPPORT:

We understand downtime and it's effect on your bottom line. Packaging machinery is only as strong as it's service and support system. If you run into challenges, All-Fill's Service team consists of 15 full time service employees with over 150 years of combined experience in the packaging industry. Our team can train, install and troubleshoot any All-Fill machinery. We service domestically and within our international territories: Canada, Central and South America, India, China and Australia. Contact our Service team at Service@All-Fill.com.

PARTS SUPPORT:

All-Fill machines are designed using the most innovative controls and the highest quality parts and components. All-Fill has an unmatched ability to identify and resolve issues that may arise with your machine. Our parts department provides quality support in a timely manner to reduce your downtime and stocks most parts for quick delivery. From mechanical assemblies, electronic components, tooling, machine accessories and software, we have the parts you need. Contact our Parts Department at AFI-parts@All-Fill.com.

INTERNATIONAL INQUIRIES:

All-Fill's packaging machinery is available worldwide for almost any product and industry. Our more than 50 years of engineering expertise combined with our industry leading field support makes us a leader in the industry. We design, manufacture, install and service machinery with maximum accuracy and reliability. Our global presence means uncompromising service and support, no matter what or where your needs are. Reach out today to discuss your project with our international sales team. Contact us at info@All-Fill.com.